

**Building Background Knowledge  
Content Pass**

You will be given a few minutes to survey each nonfiction book, article and/or website. As you survey the resource, record two interesting facts and one question.

<b>Resource</b>  <b>Title of Book Or Article or Website</b>	<b>Two Interesting Facts (In My Own Words)</b>  Record page # where each fact was found	<b>After surveying this resource, I wonder...</b>

## Vocabulary Development: Using Context Clues

Read the following sentences from *The Neptune Project*. From the words listed in bold, determine the correct word choice using the context of the sentence.

**sinuous**    **looms**    **sheathed**    **mammoth**    **callous**  
**stoic**        **hauling**        **sparring**

1. His hands are rough from \_\_\_\_\_ lines and nets on his father's fishing boat. (Chapter 1)
2. An hour later, Cam slows the zode as the dark mass of Reynard Point \_\_\_\_\_ over us. (Chapter 1)
3. Then I spot two long, narrow blue sharks swimming their \_\_\_\_\_ way toward us across the bottom. (Chapter 19)
4. Near the end of our lesson, they have us \_\_\_\_\_ with a partner, using our knives still \_\_\_\_\_. (Chapter 23)
5. I can't bear to look at the spear dart sticking out of his chest. His expression \_\_\_\_\_, Kyel floats quietly while Thom cradles his head and shoulders. (Chapter 29)
6. His words may be \_\_\_\_\_ but I can sense he is upset as the rest of us. (Chapter 29)
7. I follow Dai and Thom and shudder when I catch one last glimpse of the \_\_\_\_\_ creature sinking toward the ocean floor. (Chapter 3)

*The Neptune Project*

**Analyzing Characters: Using textual evidence to support conclusions**

*Traits to Consider: confident, considerate, intelligent, reliable, impatient, cautious, fearless, dependable, bold, timid, surly, assertive, determined, trustworthy*

<b>Character</b>	<b>Trait</b>	<b>Text Evidence: character's actions which support that trait</b>	<b>Text Evidence: dialogue by or about the character which illustrates that trait</b>
Nere Hanson			
Tobin			
Dai			
Kyel			



**Searching for Similes**  
*The Neptune Project*

Find the simile on the page listed. Record what two things are being compared. To explore in greater depth, select the three similes you think are the most effective. Why did you choose them?

Page Number	Subject	Being Compared To...
Example: p. 87	Lena's long hair	A tangled cloud
p. 179		
p. 180		
p. 188		
p. 196		
p. 207		
p. 225		
p. 232		
p. 327		

### Exploring the Features of A Dystopian Society in *The Neptune Project*

Features of Dystopian Society	Is this element present in <i>The Neptune Project</i> ? Yes or No?	Textual Evidence
Propaganda is used to control the citizens.		
Information and freedom are restricted.		
A leader or ideology is worshipped.		
Citizens are under surveillance.		
Citizens have a fear of the outside world.		
Citizens live in a dehumanized state.		
The natural world is banished and distrusted.		
Individuality and dissent are forbidden.		
The society is an illusion of a perfect utopian world.		

## Neptune Project Animal Classification

Kingdom	Phylum	Class	Order	Family	Animal Picture
<b>Animalia</b>	<b>Cnidaria</b> -Has no backbone. -Has stinging tentacles.	<b>Anthozoa</b> -Tiny animals that live as a colony. -Rings of tentacles around mouth.	<b>Octocorallia</b> -8 tentacles surrounding the mouth of each individual.	<b>Gorgoniidae</b> -Flexible body moves in the current. -Has a branched tree-like body.	<b>Coral</b>
<b>Animalia</b>	<b>Echinodermata</b> -Has no backbone. -Has spiny skin	<b>Echinoidea</b> -Has spines. - No arms. -Tube feet.	<b>Echinoida</b> -Fused shell. -Mouth on underside.	<b>Strongliocentrotidae</b>  -Round and prickly.	<b>Sea urchin</b>
<b>Animalia</b>	<b>Arthropoda</b> -Has no backbone -Has a skeleton on the outside of its body.	<b>Malacostraca</b> -Has head, thorax and abdomen.	<b>Decapoda</b> -Has 10 jointed legs.	<b>Palinuridae</b> -Thick, spiny antennae.	<b>Spiny lobster</b>
<b>Animalia</b>	<b>Chordata</b> -Has a backbone.	<b>Chondrichthyes</b> -Bones made of cartilage.	<b>Lamniformes</b> -2 fins on back, 1 on belly.	<b>Lamnidae</b> -Rows of very large teeth.	<b>Shark</b>
<b>Animalia</b>	<b>Chordata</b> -Has a backbone	<b>Chondrichthyes</b> -Bones made of cartilage.	<b>Myliobatiformes</b> -No fins on back. -Flattened body.	<b>Myliobatidae</b> -Long skinny tail.	<b>Bat ray</b>
<b>Animalia</b>	<b>Chordata</b> -Has a backbone	<b>Reptilia</b> -Has scales. -Is cold blooded.	<b>Testidines</b> -Ribs flattened to form a shell on animal's back.	<b>Cheloniidae</b> -Lives in ocean, but lays eggs on land.	<b>Green Sea Turtle</b>
<b>Animalia</b>	<b>Chordata</b> -Has a backbone	<b>Mammalia</b> -Feeds milk to young.	<b>Carnivora</b> -Primarily eats meat. -Has at least four toes on each foot.	<b>Mustelidae</b> -Under 80 pounds, has short legs, rounded ears and thick fur.	<b>Sea Otter</b>
<b>Animalia</b>	<b>Chordata</b> -Has a backbone	<b>Mammalia</b> -Feeds milk to young.	<b>Cetacea</b> -Breathes through a blow hole.	<b>Balaneopteridae</b> -Uses baleen in its mouth to feed on krill and tiny fish.	<b>Humpback Whale</b>
<b>Animalia</b>	<b>Chordata</b> -Has a backbone	<b>Mammalia</b> -Feeds milk to young.	<b>Cetacea</b> -Breathes through a blow hole.	<b>Delphinidae</b> -Curved fin on back. -Long pointy nose called a "beak."	<b>Pacific White-sided Dolphin</b>

**Cut out these pictures of animals mentioned in *The Neptune Project*. Classify the animals by matching the animals to the physical traits listed on in the animal classification table.**



**Robert Schwemmer; Channel Islands Marine Sanctuary**



**Claire Fackler; Humpback Whale Hawaiian Marine Sanctuary**



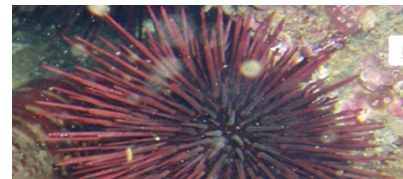
**Chad King; Monterey Bay Marine Sanctuary**



**Robert Schwemmer; Channel Islands Marine Sanctuary**



**Robert Schwemmer; Channel Islands National Marine Sanctuary**



**Claire Fackler; Channel Islands National Marine Sanctuary**



**Claire Fackler; Channel Islands National Marine Sanctuary**

